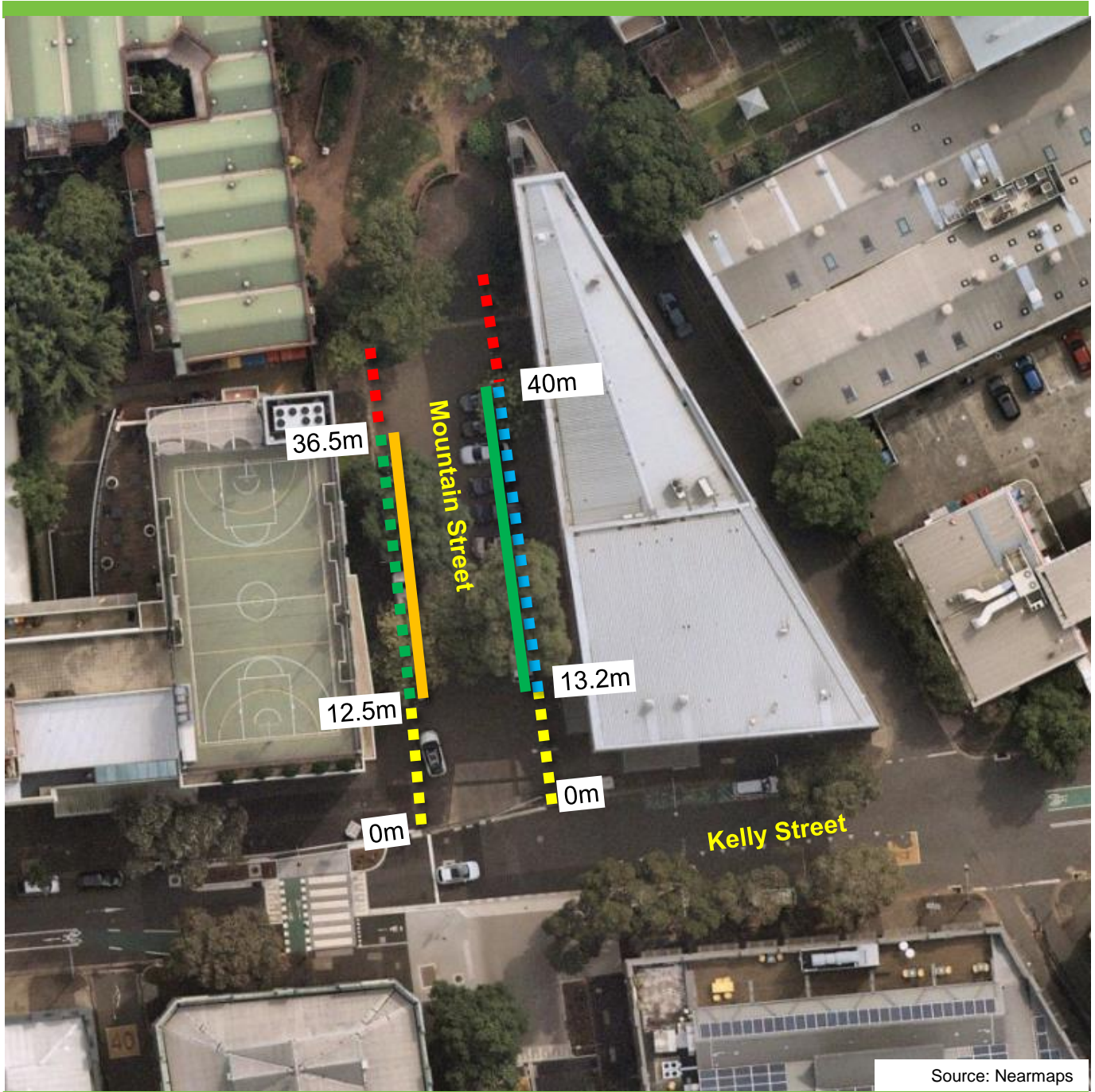


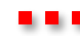





Mountain Street, Ultimo Proposed parking changes



Source: Nearmaps

Existing	Proposed
 "No Stopping"	 "1/4P 7-9.30am 2.30-4pm Mon-Fri" & "2P Ticket 9.30am-2.30pm 4-10pm Mon-Fri 8am-10pm Sat Sun & Public Holidays" & "90° Angle Parking Rear to Kerb"
 "No Parking"	 "1/4P 7-9.30am 2.30-4pm Mon-Fri" & "2P Ticket 9.30am-2.30pm 4-10pm Mon-Fri 8am-10pm Sat Sun & Public Holidays"
 "1/4P 7-9.30am 2.30-4pm Mon-Fri"	
 "1P Ticket 8am-6pm Mon-Fri, 8am-12.30pm Sat" & "90° Angle Parking Rear to Kerb"	